



**ENVIRONMENTAL
PHOTOGRAPHY AWARD**

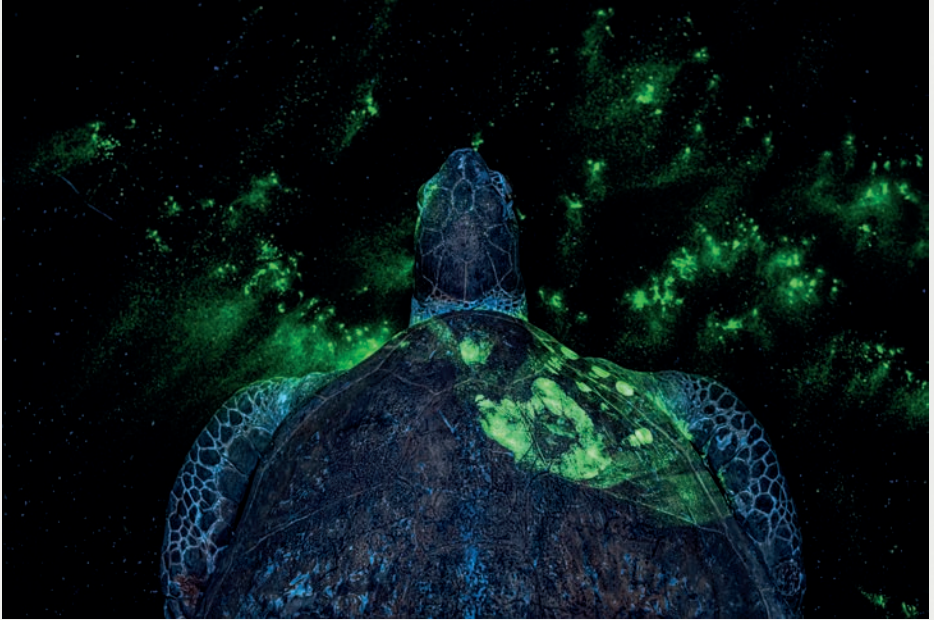
PRINCE ALBERT II OF
MONACO FOUNDATION

**2025 ENVIRONMENTAL
PHOTOGRAPHY AWARD**

GAME BOOKLET



PRINCE ALBERT II
OF MONACO
FOUNDATION



Britta Jaschinski

Handprint on Sea Turtle

Combating illegal wildlife trade with forensic science, United Kingdom, 2025

QUESTION 1

Can you spot the handprint?
What do you think this photo shows?

ANSWER

THERE'S A HANDPRINT ON THE TURTLE'S SHELL.

This photo illustrates how police forensics teams work to fight poaching. They use a special fluorescent dye on and around the animals to reveal the evidence they need to identify criminals involved in wildlife trafficking.



Alain Schroeder

Vulture Restaurant

Vulture feeding centre, Nepal, 2023

QUESTION 2

In the photo, you can see two rescue workers weighing an injured vulture that has been brought to a vulture sanctuary.

What do you think is the average weight of a Himalayan vulture?

**BETWEEN
6 AND 10 KG**

A

**BETWEEN
8 AND 12 KG**

B

**BETWEEN
10 AND 14 KG**

C

ANSWER B!

**THE AVERAGE WEIGHT OF A HIMALAYAN
VULTURE IS BETWEEN 8 AND 12 KG!**

It's one of the largest species of vulture – its wingspan can be over 3 metres.



Shane Gross

Release

Release of a green sea turtle, Seychelles, 2022

QUESTION 3

Do you know how many species of sea turtle there are?

ANSWER

There are seven species of sea turtle:

Leatherback turtle
(the largest sea turtle)

Green turtle
(the one in the photo, which feeds only on seaweed and seagrass)

Loggerhead turtle
(very widespread, with a reddish brown, heart-shaped shell)

Hawksbill turtle
(recognisable by its sharp hooked bill, like that of a hawk)

Olive ridley turtle
(one of the smallest turtles, with an olive green shell)

Kemp's ridley turtle
(one of the rarest and most endangered turtles)

Flatback turtle
(only found in Australian waters)

Six of the world's seven species of sea turtle are at risk of extinction (classified by the International Union for Conservation of Nature as vulnerable, endangered or critically endangered). This is because of human exploitation, habitat destruction and marine pollution.



Doug Gimesy

Bare Nose to Bare-Nosed Wombat

Rescue of a baby wombat, Australia, 2022

QUESTION 4

In the photo, you can see a baby wombat.
Do you know what an adult wombat looks like?



A



B



C

ANSWER C!



This is a species of marsupial mammal that lives in the mountain forests of Australia.

The other two animals also live in Australia:
photo A is a Tasmanian devil and photo B a koala.



Peter McGee

Conservation vs Tourism

Whale shark tourist site, Philippines, 2025

QUESTION 5

Count the number of whale sharks and the number of divers. What are your thoughts about this photo?

ANSWER

**THERE ARE AT LEAST 20 DIVERS SURROUNDING
THE TWO WHALE SHARKS.**

Whale shark tourism is causing serious problems for this species, which is already classified as endangered.

In these overcrowded waters, the animals are fed (which interferes with their natural migration patterns), at risk of injury, put under stress, and harmed by plastic pollution.



Henley Spiers

Shearwater's Dilemma

Wedge-tailed shearwater in a school of lanternfish, Costa Rica, 2023

QUESTION 6

Wedge-tailed shearwaters are birds that spend most of their lives at sea. They fish on the surface but can also dive underwater.

How deep do you think they can dive?

15 METERS

A

30 METERS

B

60 METERS

C

ANSWER C!

Wedge-tailed shearwaters can dive to a depth
of up to 60 metres!



Shane Gross

Ocean BNB

Crested sculpin and lion's mane jellyfish, United States, 2022

QUESTION 7

What is happening in this photo?

- A THE FISH IS CAUGHT IN THE JELLYFISH'S TENTACLES
- B THE FISH IS CAMOUFLAGING ITSELF AMONG THE STRANDS
- C THE FISH IS FEEDING OFF THE JELLYFISH

ANSWER C!

Crested sculpins, like some other fish and sea creatures, live among jellyfish and feed off them. They are immune to the jellyfish's sting.



Arnaud Farré

Spirits of the Falls

Iguazu Falls, Argentina and Brazil, 2024

QUESTION 8

In this photo, you can see two toucan toucans.

What do you think they eat?

ANSWER

Toco toucans are the largest and most common species of toucan. They live in trees and eat fruit. They are said to be “frugivorous”.



Vadim Makhorov

The Gathering

Pacific walrus, Russia, 2025

QUESTION 9

What is special about Pacific walrus?

THEY ARE THE
LARGEST

A

THEY ARE THE
MOST NUMEROUS

B

THEY ARE THE
SMALLEST

C

ANSWER A!

Pacific walruses are the largest walruses on the planet, males can reach up to 4 metres in length and weigh as much as 1.5 tons.



Panos Laskarakis

The Explorers

Polar bear mother and cub, Norway, 2025

QUESTION 10

Polar bears are now endangered.
Do you know what is putting this mammal at risk?

CLIMATE CHANGE

POLLUTION

HUMAN ACTIVITIES

A

B

C

ANSWER

ALL THREE!

Climate change poses the greatest threat to polar bears, because the ice is melting, reducing their habitat and hunting grounds.

Human activities, such as oil and gas drilling, are also endangering the bears and other polar animals by destroying their habitats, disrupting their way of life and polluting their environment.



**ENVIRONMENTAL
PHOTOGRAPHY AWARD**

PRINCE ALBERT II OF
MONACO FOUNDATION

THANK YOU!

Thanks for playing with us.

We hope you enjoyed the exhibition and learned new things
from this quiz booklet.

Now it's your turn to share the photographs and their
messages with your family and friends.

SEE YOU SOON!

The team at the Prince Albert II of Monaco Foundation.